



1504 Third Avenue, Third Floor
Rock Island, IL 61201
Phone: (309) 793-6300 • Fax: (309) 793-6305
Website: <http://www.bistateonline.org>

Serving local governments in Muscatine and Scott Counties, Iowa; Henry, Mercer and Rock Island Counties, Illinois

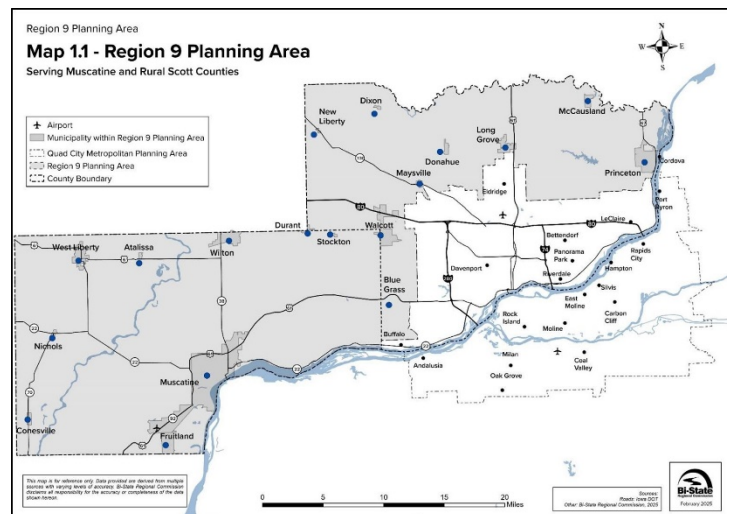
FOR MORE INFORMATION CONTACT:

Zach Sutton
(309) 793-6300, Ext. 1127
zsutton@bistateonline.org

Public survey, input opportunities are available for 2050 Iowa Region 9 Long-Range Transportation Plan

ROCK ISLAND, Illinois - Transportation connects neighbors, businesses, and our community services. It gets us to where we want and need to go. A reliable and efficient transportation network supports a dynamic, connected, and viable region.

Regional transportation priorities are reviewed and updated every five years in the Iowa Region 9 Long-Range Transportation Plan (LRTP) for the area covering all of Muscatine County and Scott County, excluding the Iowa Quad Cities (see map). The plan looks at regional economic and population changes, condition of Region 9 transportation assets, and mobility trends that may impact future use of the transportation system.



These insights and identification of needs within Region 9 allow communities to plan for future growth and the best transportation to support it.

Imagine transportation in 2050. Will planning bring desired changes to our roads, bridges, bus routes, trails, sidewalks, and freight system? Are residents looking to enjoy new travel options, like passenger rail connections and more bus services for daily commutes? With nearly 1,500 miles of roadways to



1504 Third Avenue, Third Floor
Rock Island, IL 61201
Phone: (309) 793-6300 • Fax: (309) 793-6305
Website: <http://www.bistateonline.org>

Serving local governments in Muscatine and Scott Counties, Iowa; Henry, Mercer and Rock Island Counties, Illinois

maintain, residents in Region 9 also may think about how cities and the counties can do this safely and effectively.

Looking ahead, it's essential to consider whether the Region 9 economy will continue to focus on logistics, food production, manufacturing, and healthcare. How will our roads, bridges and other transportation assets help move people and goods?

Together, public involvement can contribute to a better transportation system that benefits Region 9 for years to come.

The Bi-State Regional Commission is excited to invite public input through a public information survey. Go to the link <https://www.surveymonkey.com/r/PJRYCY2> to give your transportation feedback on what is working and what is not. The survey will be open through May 1, 2025.

This and future public input opportunities will help shape the future of the Iowa Region 9 transportation system and economy.

In the next year, Bi-State staff will work with local officials to prepare a full draft Long Range Transportation Plan document by early 2026. The plan will include transportation goals, existing and proposed transportation systems, and other infrastructure/development recommendations. Additional public input is planned prior to the adoption of the plan in early 2026. To review the existing 2045 Long-Range Transportation Plan for Region 9, visit <https://bistateonline.org/transportation-and-mobility/iowa-region-9-area/lrtp-region-9>.

For more information or comments on these planning efforts, contact Bi-State Regional Commission at (309) 793-6300.