



CITY OF MUSCATINE
215 SYCAMORE STREET
MUSCATINE, IA 52761
PH. (563) 264-1550 • FAX (563) 264-0750

CITY OF MUSCATINE PRESS RELEASE

For more information contact:

Kevin Jenison
Communication Manager
E-Mail: kjenison@muscatineiowa.gov
Phone: (563) 264-1550 • Fax: (563) 264-0750

FOR IMMEDIATE RELEASE
APRIL 28, 2021

WASHINGTON AND PARK INTERSECTION TO BE CLOSED MAY 5-21

5th and Park Avenue intersection partially closed to traffic through April 28-May 3

MUSCATINE, Iowa – Two Park Avenue intersections are or will be closed to traffic as work on the Park Avenue 4-to-3 Lane Conversion Project continues in Muscatine. The east half of the East 5th Street and Park Avenue intersection is currently closed to traffic through Monday (May 3) while the Washington and Park Avenue intersection is expected to be closed for just over two weeks starting Wednesday, May 5. All dates are weather permitting.

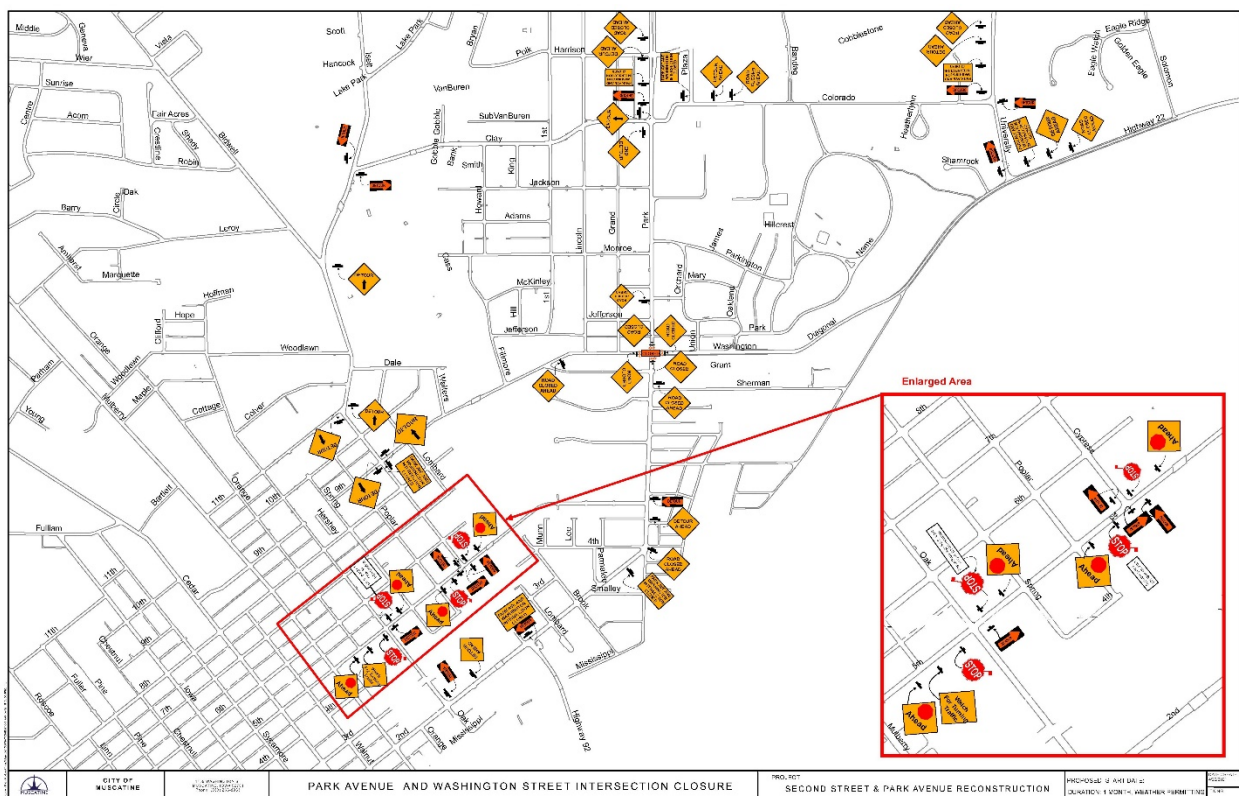
The east half of the East 5th and Park Avenue intersection is currently closed for the installation of the traffic signals in that half of the intersection by Tri-City Electric.

The north side of the east half will be closed all day Wednesday for the installation of traffic signals (no westbound traffic). The south side of the east half will be closed Thursday and Friday for installation of the mast arm post and mast arm (no eastbound traffic). The intersection will remain closed through Monday as Heuer Construction, Inc., completes sidewalk installation in that half of the intersection, weather permitting.

Currently, northbound through traffic on East 5th Street is detoured at Cypress to Washington Street and then back to Park Avenue. Only local traffic will be permitted past Cypress until the intersection is reopened.

Manatts, the prime contractor for the Park Avenue project, will close the Washington and Park Avenue intersection through at least May 21, weather permitting.

The east half of the intersection will be closed starting Wednesday as Muscatine Power & Water replaces a water main in the intersection. Once that is completed, Heuer Construction, Inc., will remove and replace the pavement. City officials indicate that the west half will be removed and replaced starting May 13 and the intersection reopened to traffic on May 21, weather permitting.



Washington-Park Avenue Intersection Detour

- Highway 22 traffic heading into Muscatine will be detoured onto University Avenue and then to Colorado before returning to Park Avenue.
 - Local traffic only will be permitted past University Avenue while the intersection is closed.

-
- Southbound traffic will turn right on to Park Avenue and proceeding to the U.S. 61 Bypass where they will be able to continue south.
 - Traffic heading to Downtown Muscatine will be able to continue down Clay to Isett and Cypress before turning right onto East 5th Street.
 - Highway 92 traffic coming off the bridge will be detoured down East 2nd Street to Mulberry Avenue, East 5th Street, Cypress, Isett, and Clay before returning to Park Avenue.
 - Northbound traffic on Park Avenue will be detoured at East 5th Street and pick up the detour route at Cypress.
 - Southbound traffic on Park Avenue will be detoured at Clay Street and pick up the detour route at Isett.
 - Local traffic only permitted on Park Avenue and Washington Street for the duration of the intersection closure.

[Detailed Detour Map \(PDF\)](#) | [Detailed Detour Map \(JPG\)](#)

Other Park Avenue Project news:

The new traffic signals at the intersection of East 2nd Cypress Streets are now in “flashing red” mode and will continue in that mode until all traffic signals that are part of the Park Avenue 4-to-3 Lane Conversion Project have been installed, timed, and made operational.

The traffic signal mast arms and pedestrian poles are being installed in the east half of the East 5th Street intersection this week. Work on the west side traffic signals will begin on Monday (May 3) when Taylor Ridge Drilling will be on site to drill the hole for the mast arm foundation. Once the foundation has been poured, a new sidewalk will be installed. Depending on the cure rate for the mast arm foundation, Tri-City Electric anticipates returning to put up the mast arm and mast arm signals on the west side either May 7 or May 10.

Full depth patch on the west side of Park Avenue is progressing with concrete work continuing from Washington Street south to East 4th Street.



CITY OF MUSCATINE
215 SYCAMORE STREET
MUSCATINE, IA 52761
PH. (563) 264-1550 • FAX (563) 264-0750

Lane restrictions are currently in place with the west side two lanes closed to traffic. The east side two lanes are open with one lane of traffic in each direction. The lane restrictions will continue until full depth patching is completed in this stage of the project.

Drivers are reminded to slow down and use caution when travelling through the construction zone, obey traffic control devices, and be aware of workers. Use an alternate route if possible.

For more information on City of Muscatine construction projects click on [CONSTRUCTION](#) to visit the Department of Public Works Construction Projects page.

If you have a comment or concern, please email feedback@muscatineiowa.gov or pwrequest@muscatineiowa.gov. A staff member will respond within 24 hours.