

City Administrator Report to Mayor & City Council

January 13, Edition No. 252

WEEKLY UPDATE:

- Mississippi Drive: Reminder: There will be a public meeting this coming Thursday, January 19th at 6pm in the Council Chambers. Jim Edmond will have a brief presentation and then allow for individual questions related to the project. Just a reminder that we have been reviewing the project and it remains our goal to provide parking and boating access as well as rental of the Riverview and Pearl City Station facilities, but large events will likely need to be relocated during the construction period. Staff will certainly work with event coordinators to find alternative locations for events.
- February In-Depth: Tim Buelow will be in attendance and is planning on providing a landfill update next month. Most bracketing well results should be back by then. He also plans to include an update on the consolidation work.
- EPA: Attached are pdfs of the PowerPoint presentation from last week's Greening America's Community public meeting.
- CVB: There are 12 applications for the CVB position. We are also looking at the option of a contract for services (staffing). Additionally, McDaniels has supplied the attached December campaign report for review. Also, attached is the local committee's next video/commercial which will begin playing next week.
- Revised Budget Schedule: Please see the revised budget schedule.
- Chinese Orchestra: FYI - You may have heard the City of Muscatine is excited to once again welcome a world-renowned Chinese orchestra from the China Arts and Entertainment Group! The name of this orchestra is the Shaanxi Province Song and Dance Theater National Orchestra. They will be performing a free concert in Muscatine on Feb. 1 at 7 p.m. at Calvary Church, 501 W. Bypass 61. Tickets will not be required. The Shaanxi Province Song and Dance Theater National Orchestra will be visiting Muscatine following their performances in Chicago and Detroit for Chinese New Year Celebrations. The highlight of the trip for the previous orchestra visitors was our homestays. For many, these visitors came as strangers, but left as friends. We are again hoping to offer a homestay opportunity to this orchestra. If you and your family would be willing to host, please reply back to me (Emily) with the number of guests you can accommodate. Below is a summary of the preliminary schedule - please note exact details may likely change.
 - Tuesday, January 31 (6pm) - Chinese Orchestra arrives from Detroit. Homestay families will meet guests at China Garden
 - Wednesday, February 1 (AM) - Homestays provide breakfast and transportation to the morning meeting point
 - During the day, the orchestra will tour the city and have a rehearsal.
 - February 1 (7pm) - Performance
 - February 1 - Post Performance Reception at Geneva Country Club

- Thursday, February 2 - Orchestra departs from Hy-Vee Parking lot, very early. Homestays provide transportation for their guests to Hy-Vee.
- If you are interested in hosting, but could not provide transportation, the committee can make those arrangements.

**PROPOSED 2017/2018 CITY COUNCIL BUDGET SCHEDULE
CITY HALL CONFERENCE ROOM**

Date	Time	Department/Agency
Thursday, January 26, 2017	5:30 p.m.	General Fund Overview to City Council
Saturday, January 28, 2017	8:00 a.m. to 4:00 p.m.	City Council Budget Review Legal Services City Administrator Human Resources Risk Management Finance Information Technology Community Development Airport/Airport Subsidy Police Operations Animal Control Library Operations Cablevision Art Center Fire Operations Ambulance
Monday, January 30, 2017	5:30 p.m. to 8:30 p.m.	Parks Administration Park Maintenance Swimming Pools Recreation Soccer Kent Stein Wellness Cemetery Golf Course Boat Harbor Marina
Tuesday, January 31, 2017	5:30 to 8:30 p.m.	Public Works Administration Engineering Roadway Maintenance Traffic Control Snow and Ice Street Cleaning Building & Grounds Collection & Drainage Equipment Services Equipment Replacement

Date	Time	Department/Agency
Thursday, February 2, 2017 (City Council meeting)	5:30 p.m. to 7:00 p.m.	Chamber CVB Senior Resources Humane Society MCSA
Saturday, February 4, 2017	8:00 a.m. to 4:00 p.m.	Iowa Legislators Transit Parking Refuse Collection Landfill Transfer Station WPCP Storm Water Housing Review & Discussions Begin – General Fund
Tuesday, February 7, 2017	5:30 p.m. to 8:30 p.m.	Capital/Debt/TIF/RUT Local Option Review
Wednesday, February 8, 2017	5:30 p.m. to 8:30 p.m.	Review & Discussion Decisions for Public Hearing (may continue to February 11th)
Saturday, February 11, 2017	8:00 a.m. to 4:00 p.m.	Final Decisions for Public Hearing (extra meeting unless concluded February 8th)
Tuesday, February 14, 2017	5:30 p.m. to 6:00 p.m.	Set Public Hearing
Thursday, March 2, 2017		Public Hearing & Adoption
March 15, 2017		Approved budget filed with County Auditor for certification



Free World-Renowned Chinese Orchestra Concert
Wednesday, Feb. 1 at 7 p.m. - Calvary Church

DESIGN CHARRETTE

JANUARY 4 – 6, 2017



- 01 WHAT we are doing for you
- 02 your ASSESSMENT of existing facilities
- 03 your DESIRES for future improvements
- 04 your OPINION of design options
- 05 moving FORWARD





- **Grandview Ave.**
 - 2.2 miles
 - US 61 to Franklin St.

01 inventory & ANALYSIS

02 stakeholder INPUT

03 preliminary DESIGN & review

04 refine & final master REPORT



Complete Streets

aim to improve quality of life and promote healthy living for users by creating streets that are both great public spaces and sustainable transportation networks.

Multimodal



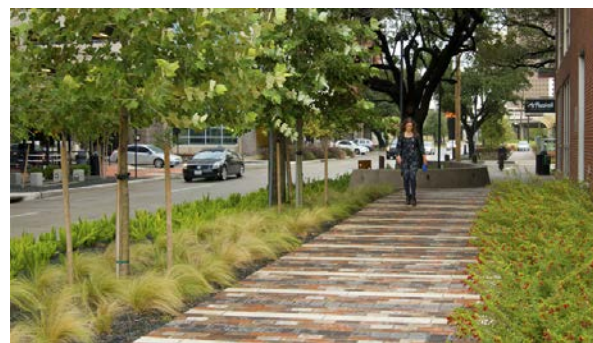
Integrate:

Pedestrians
People with Disabilities
Bicyclists
Transit Users
Motor Vehicle Drivers

Goal:

to ensure that streets are shared by all users and not dominated by cars

Green



Integrate:

Street Trees
Rain Gardens
Bio-Swales
Paving Materials
Permeable Surfaces

Goal:

promote an environmentally sensitive, sustainable use of the public right-of-way

Smart



Integrate:

Intelligent Signals
Smart Meters
Electric Vehicle Sharing
Car and Bicycle Sharing
Way-Finding
Social Networks

Goal:

greater system efficiencies and user convenience

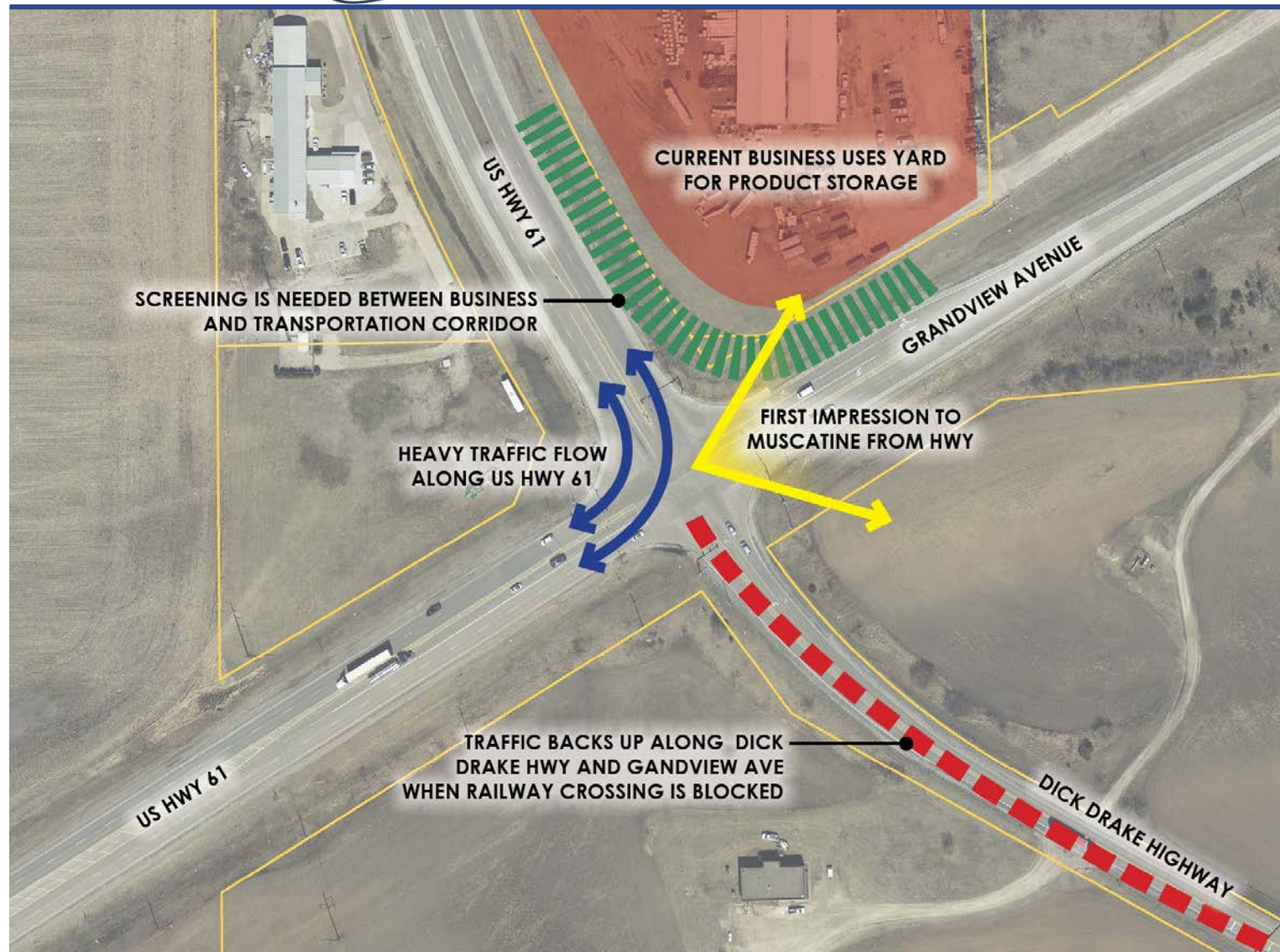


Key Grandview Avenue Locations



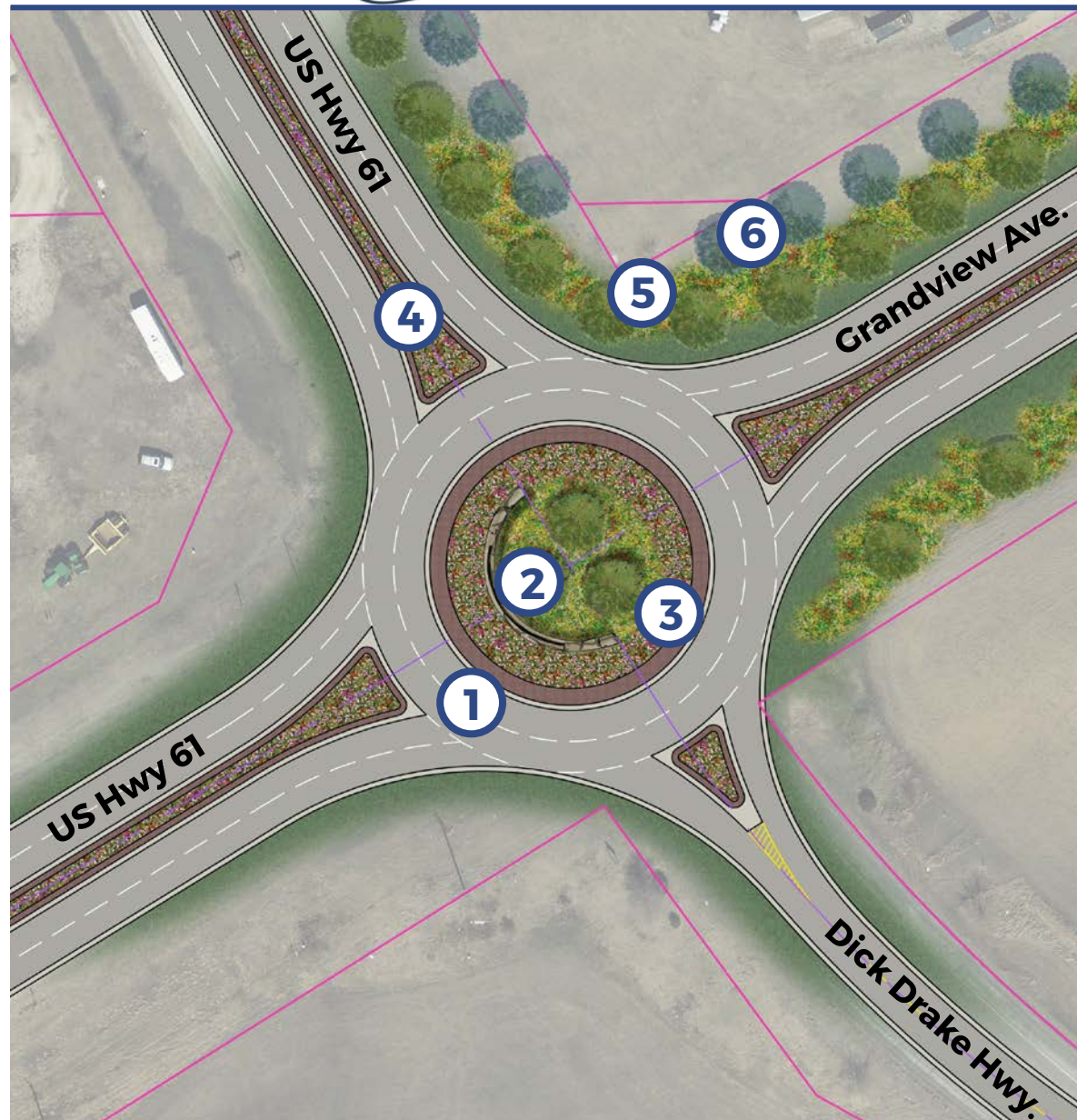
- 01 US Hwy 61 Intersection**
- 02 Houser & Sampson Street Intersection**
- 03 Brier's Ditch**
- 04 Warren & Oregon Street Intersection**
- 05 Block between Bond & Franklin Streets**

Site 01: US 61 / Dick Drake Hwy. Intersection



Existing Conditions & Considerations:

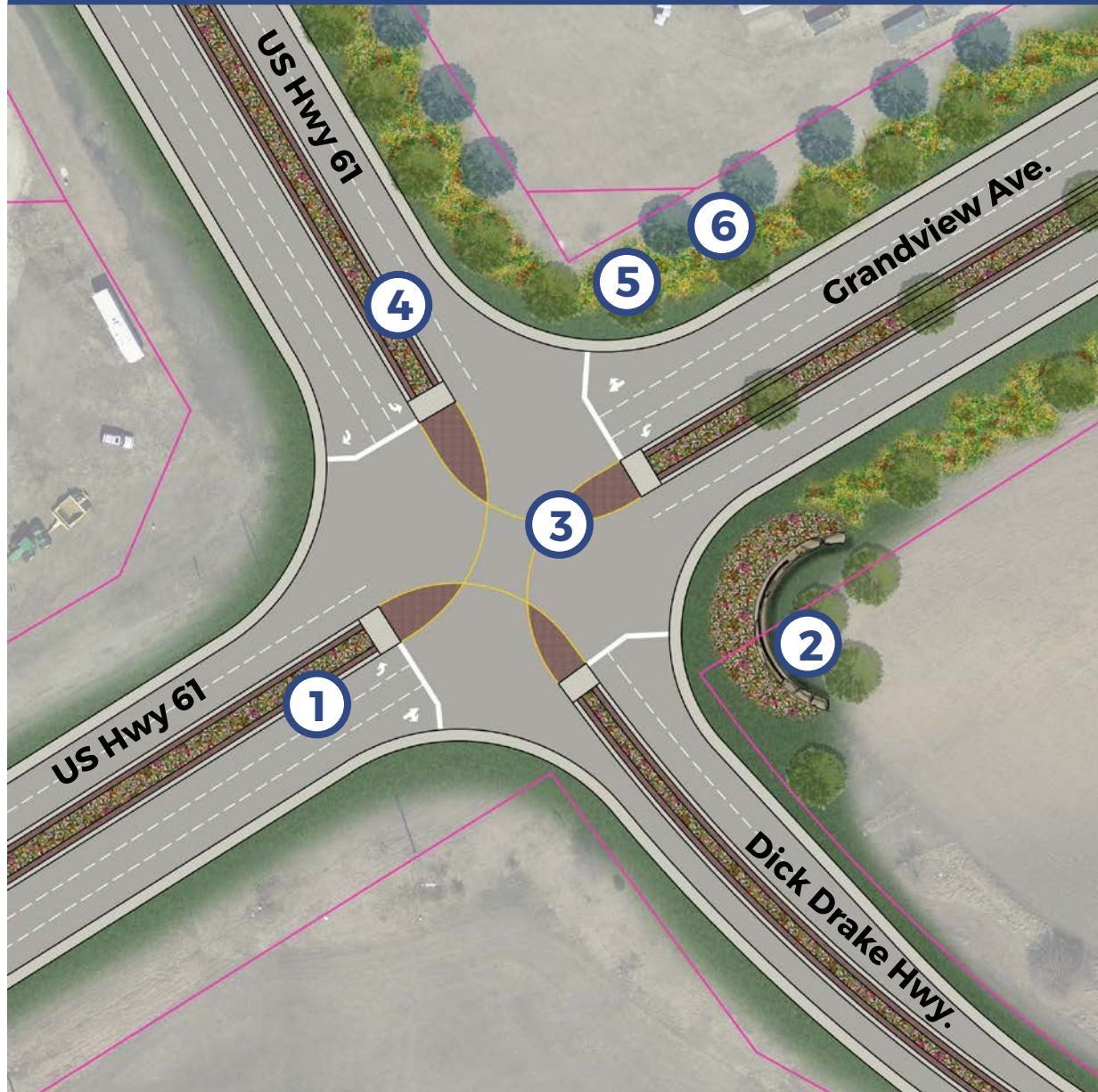
- Very busy intersection
- No community gateway elements
- Lots of truck traffic
- Primarily a vehicular intersection with no pedestrian traffic



Option 'A' Design Components:

1. Two-lane round-a-bout
2. Muscatine monument signage
3. Paver island apron
4. Landscaped median with paver splash pad (typ.)
5. Storm water swales with native plants and trees (typ.)
6. Evergreen screening (typ.)

Site 01: US 61 / Dick Drake Hwy. Intersection

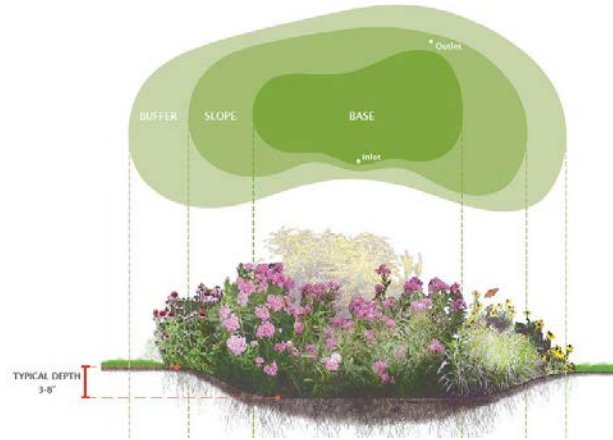


Option 'B' Design Components:

1. Designated left turn lane (typ.)
2. Muscatine monument signage
3. Intersection specialty paving
4. Landscaped median with paver splash pad (typ.)
5. Storm water swales with native plants and trees (typ.)
6. Evergreen screening (typ.)

Design Precedents:

Bioswale



Round-a-bout



Median Splash Pad

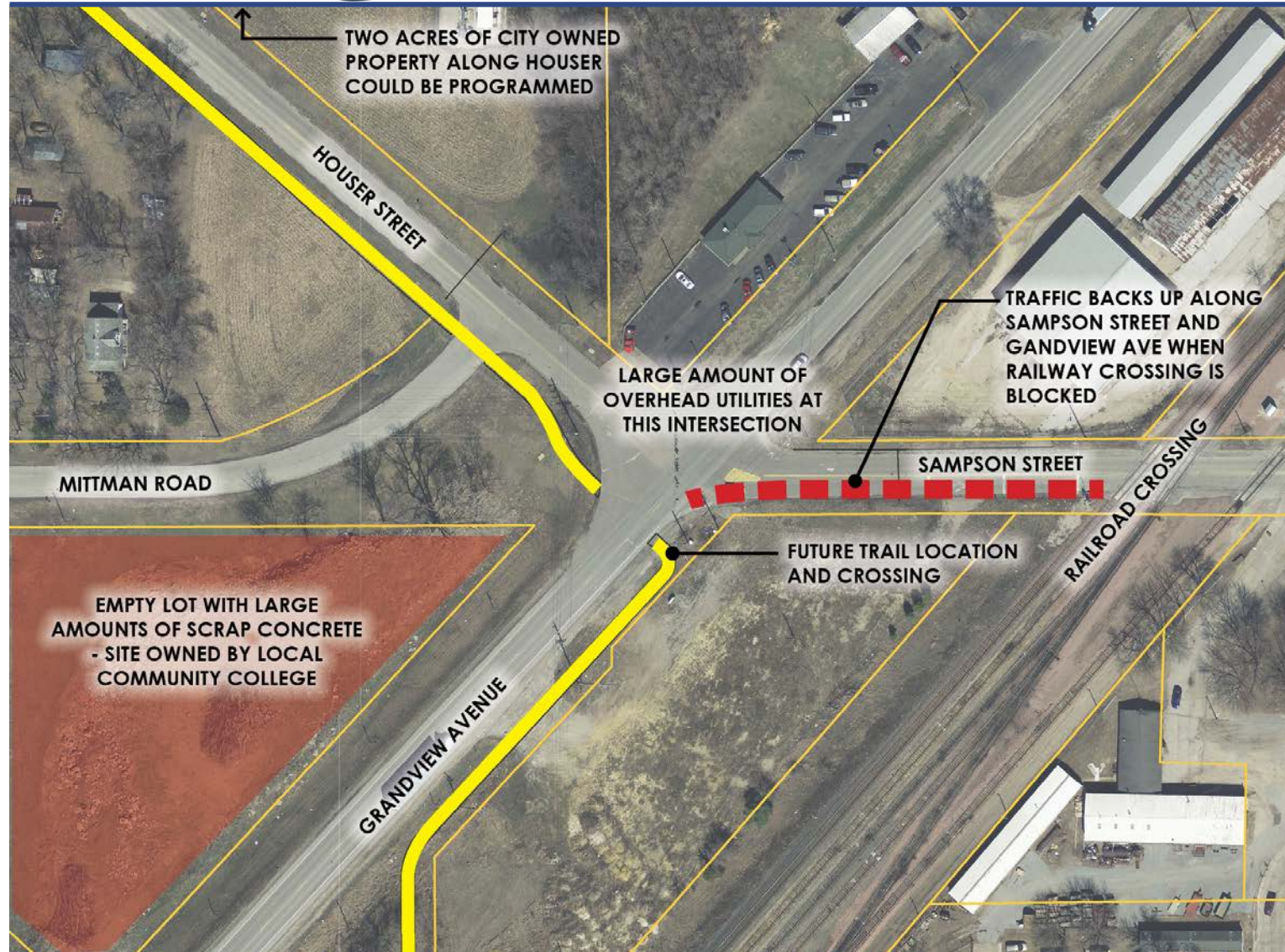


Applicable Areas:





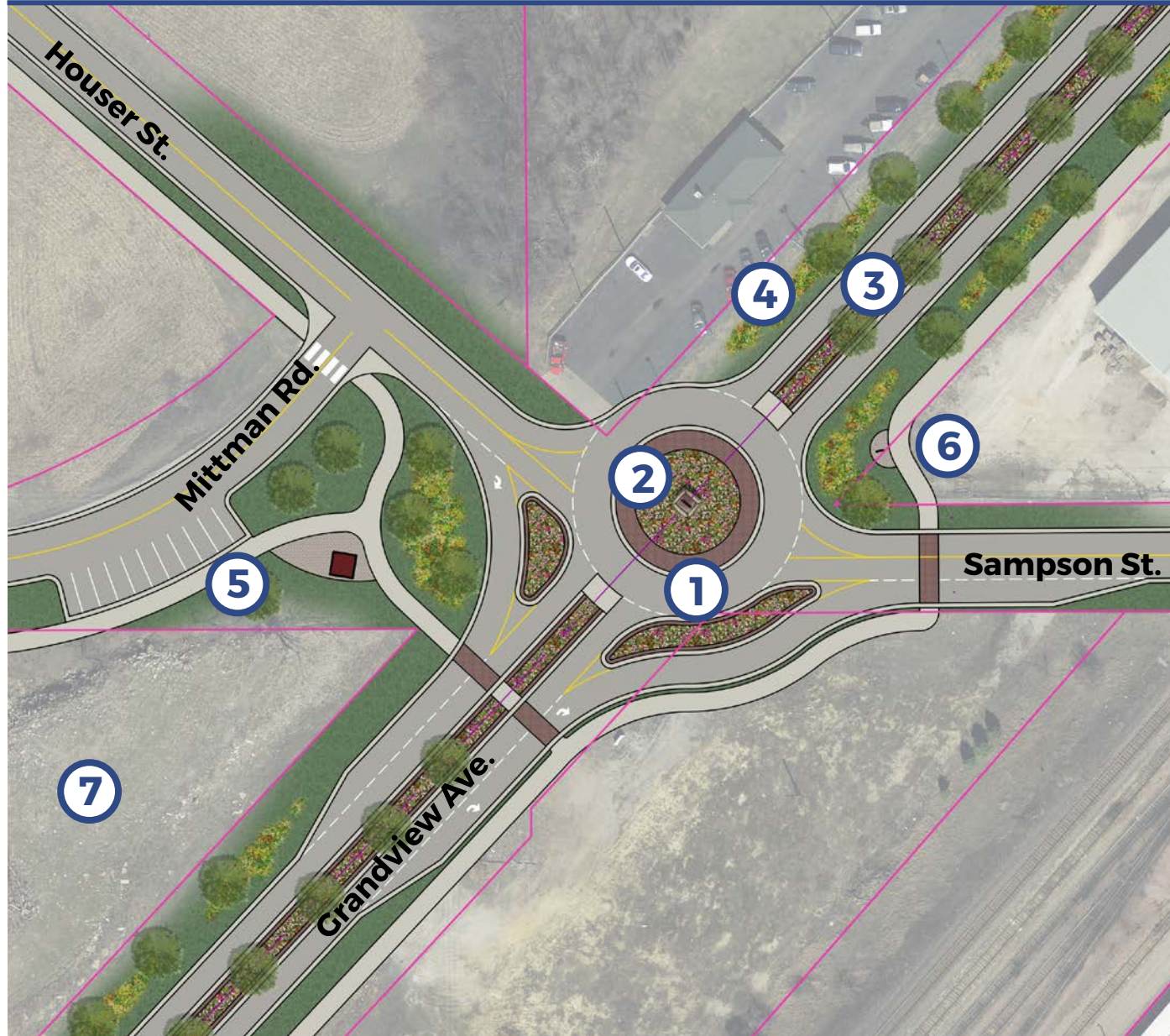
Site 02: Houser St. / Sampson St. Intersection



Existing Conditions & Considerations:

- Could act as a smaller scale community gateway
- Atypical intersection
- Hazardous conditions for pedestrians
- New trail crossing

Site 02: Houser St. / Sampson St. Intersection

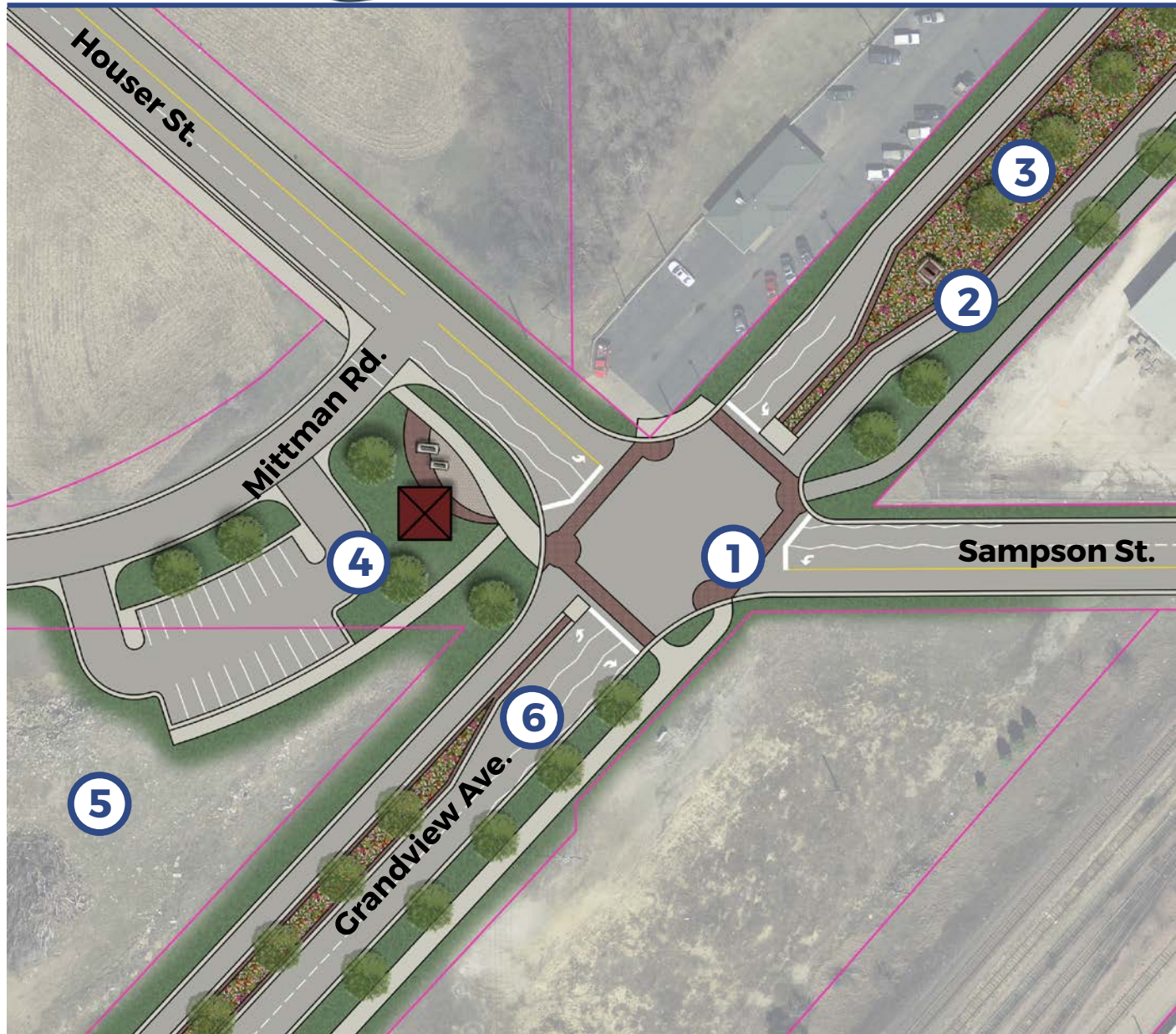


Option 'A' Design

Components:

1. Single-lane round-a-bout
2. Muscatine monument signage
3. Landscaped median with paver splash pad (typ.)
4. Storm water swales with native plants and trees (typ.)
5. Trailhead with shelter
6. Trail system signage
7. Bike terrain park

Site 02: Houser St. / Sampson St. Intersection



Option 'B' Design

Components:

1. Specialty paving crosswalks
2. Muscatine monument signage
3. Bioswale median with paver splash pad (typ.)
4. Trailhead with shelter
5. Neighborhood park
6. Zig-zag pavement markings



Site 02: Houser St. / Sampson St. Intersection

Design Precedents:

Round-a-bout



Art Shelter



Zig-zag Pavement Markings



Bike Terrain Park



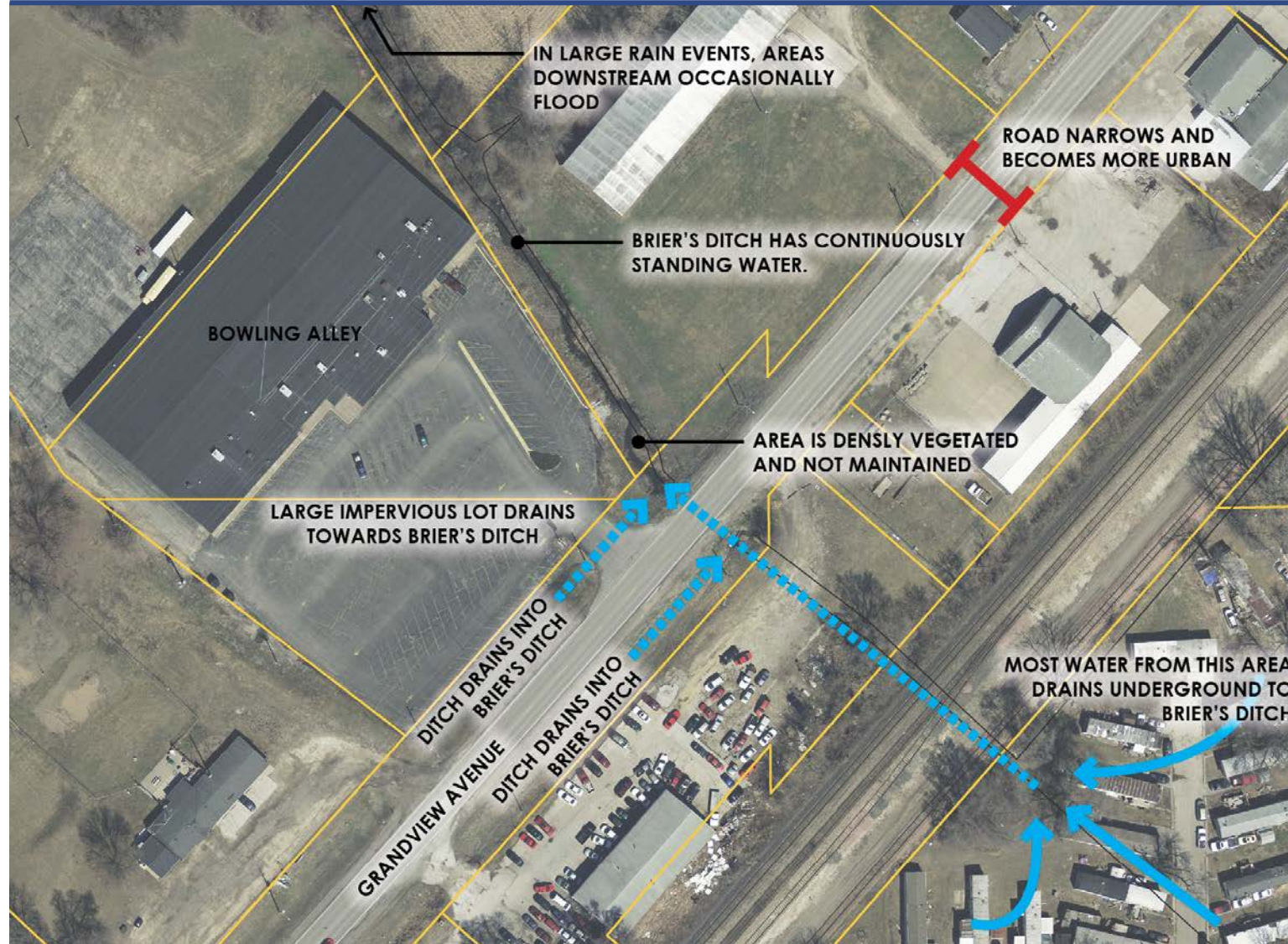
Applicable Areas:

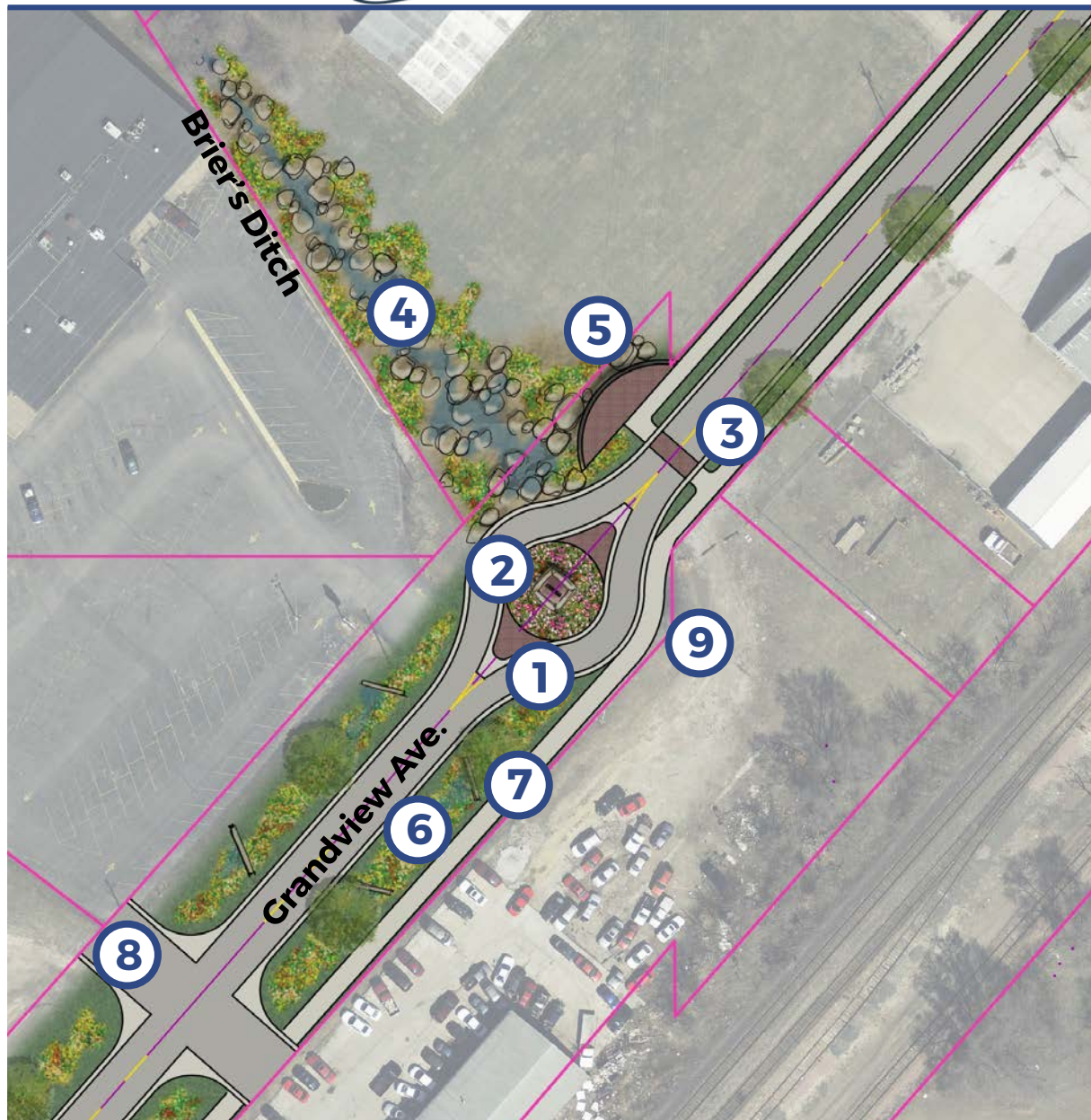


Site 03: Brier's Ditch

Existing Conditions & Considerations:

- Major drainageway for corridor
- No pedestrian routes





Option 'A' Design Components:

1. Single lane "eye-brow"
2. Monument signage / art sculpture
3. Specialty paving crosswalk
4. Add rock outcroppings and river rock bottom with native plants
5. Brier's overlook with trail head
6. Storm water swales with native plants, trees, and stone (typ.)
7. Continuation of trail
8. Consolidate business driveways
9. Extend storm sewer under road



Option 'B' Design Components:

1. Bioswale median with landscaping and stone elements
2. Muscatine monument signage
3. Add rock outcroppings and river rock bottom with native plants
4. Extend storm sewer under road
5. Continuation of trail
6. Consolidate business driveways (turn lanes may occur)
7. Offset roadway for trail buffer

Design Precedents:

Boulder Stream



Bioswale Median



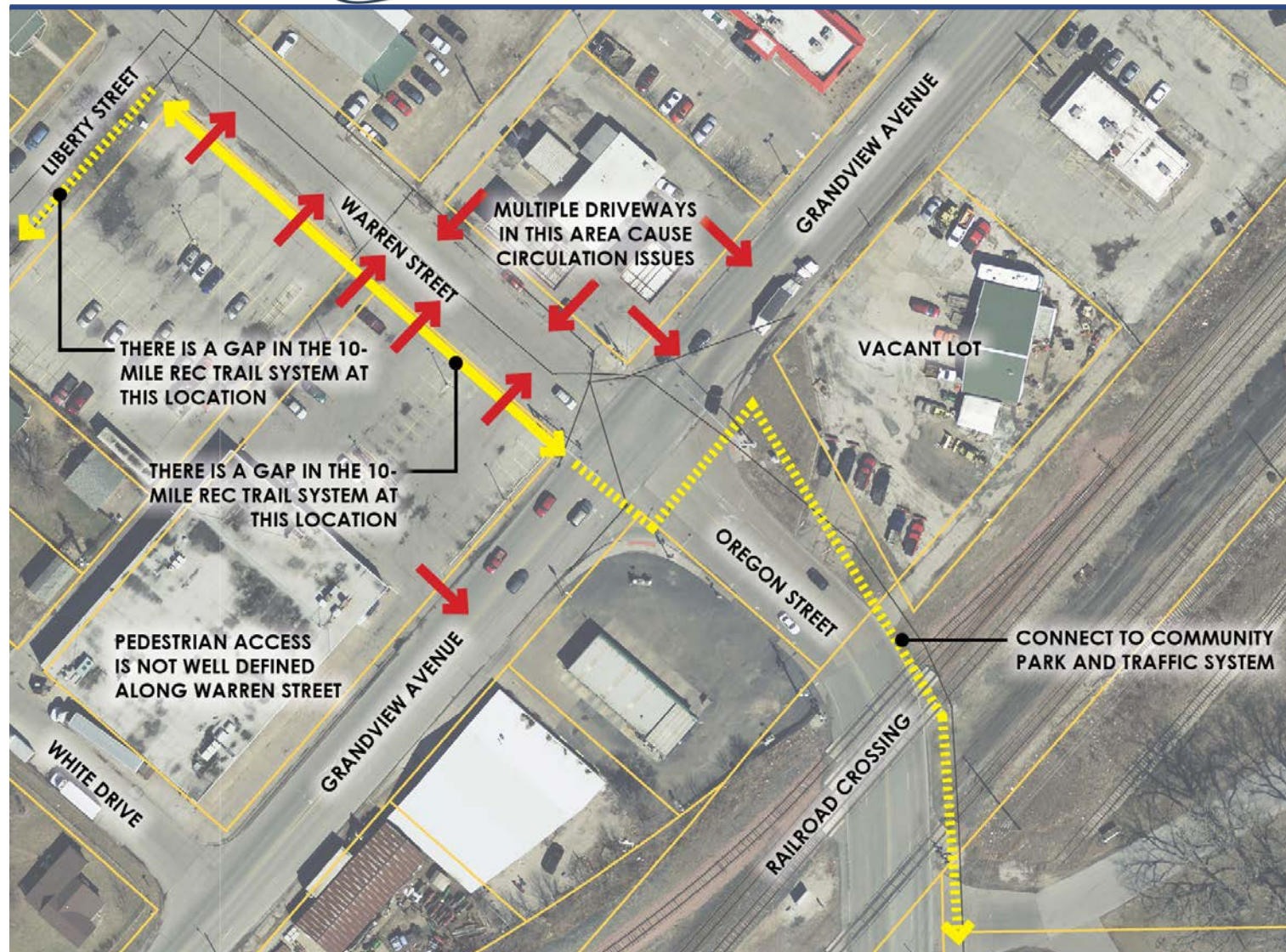
Median Art Sculpture



Applicable Areas:



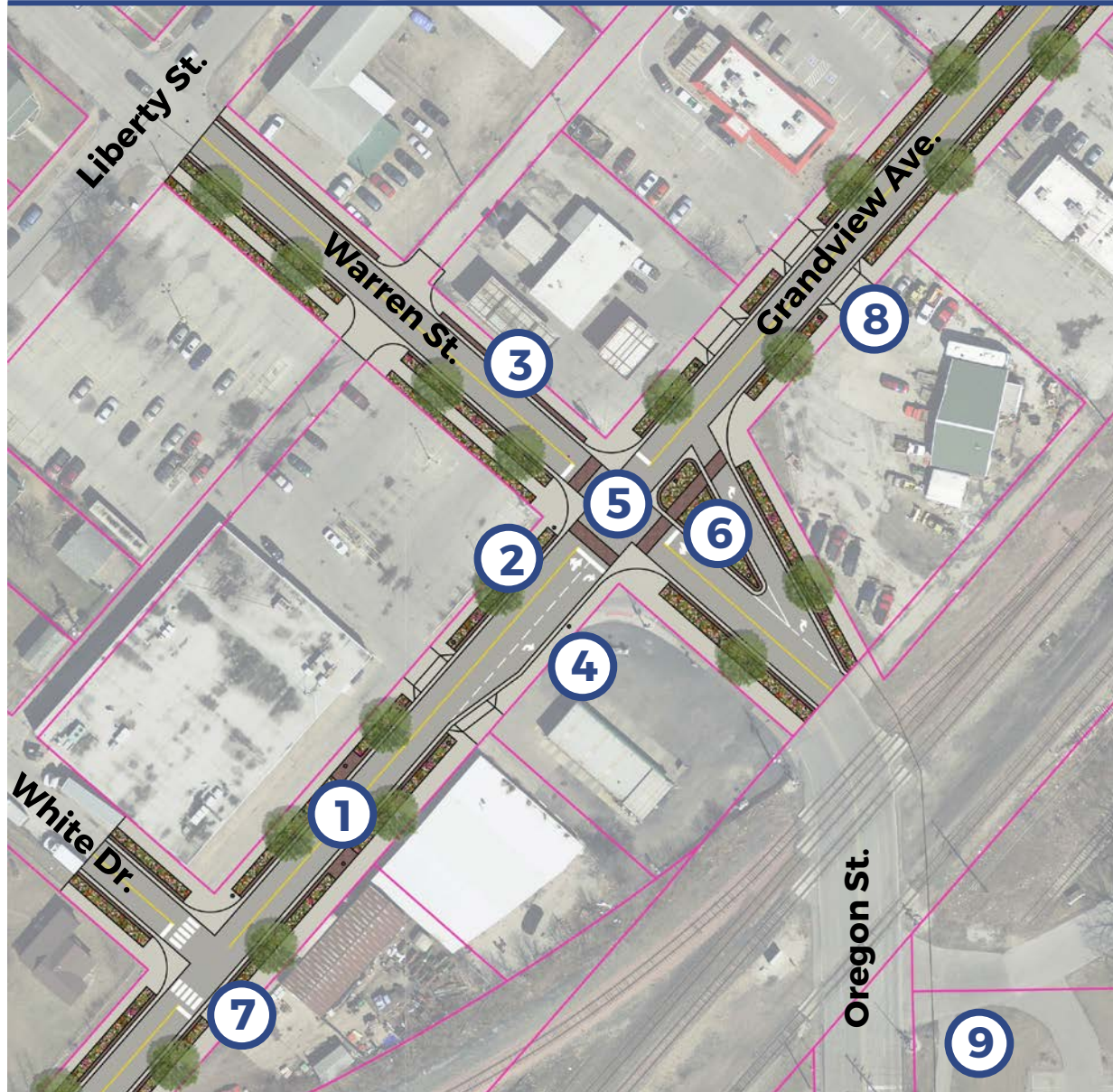
Site 04: Warren St. / Oregon St. Intersection



Existing Conditions & Considerations:

- Narrow sidewalks and fast moving traffic
- No green space or shade
- Hazardous pedestrian crossings

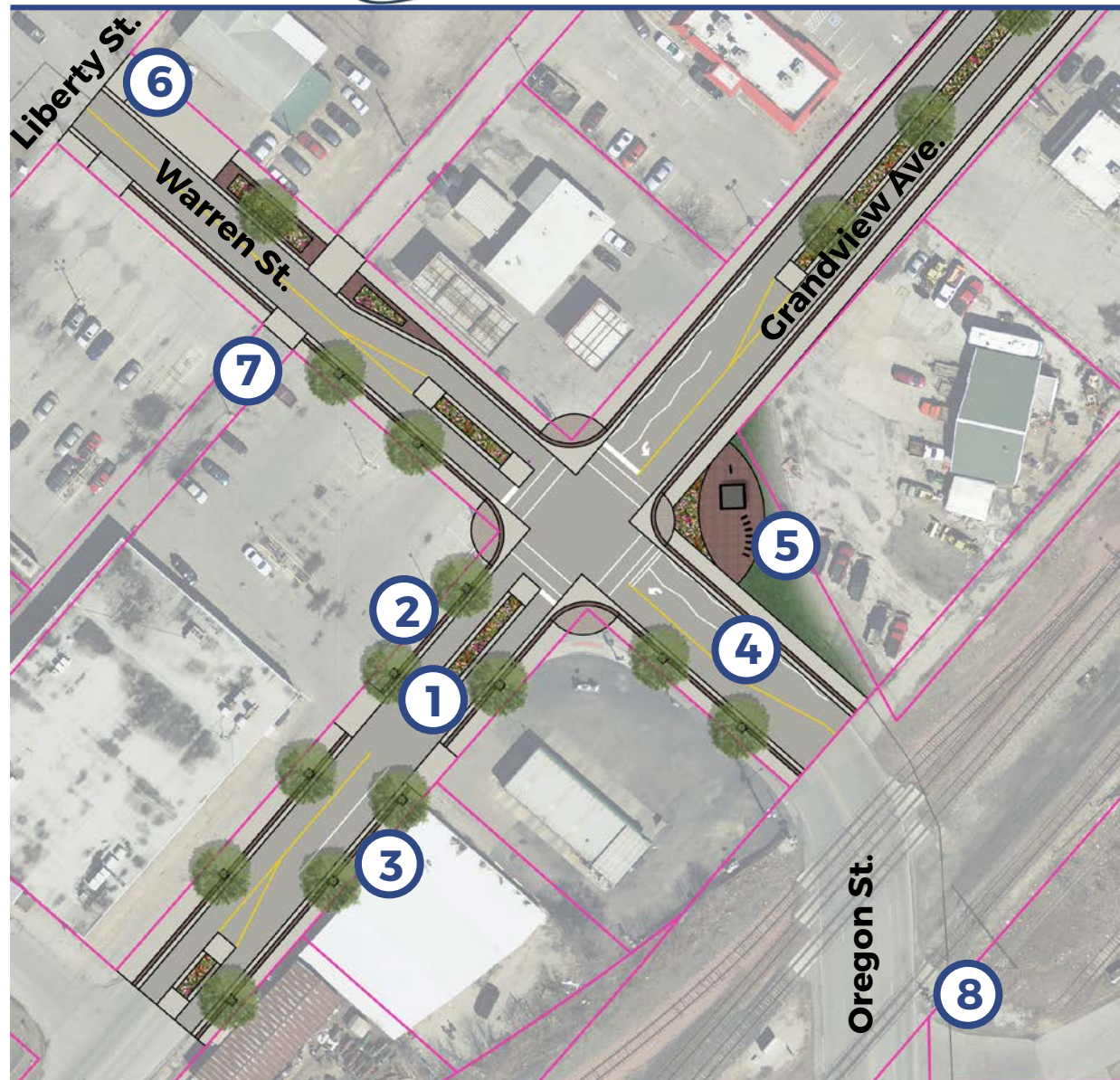
Site 04: Warren St. / Oregon St. Intersection



Option 'A' Design Components:

1. Two-lane road
2. Storm water planter (typ.)
3. Pervious paving system and splash pad (typ.)
4. Decorative street lighting (typ.)
5. Specialty paving crosswalks (typ.)
6. Right turn only and landscape median
7. Trail continuation
8. Relocate business driveway
9. Trail head in park

Site 04: Warren St. / Oregon St. Intersection



Option 'B' Design Components:

1. Landscape median (typ.)
2. Tree grate with pervious paving (typ.)
3. Decorative street lighting (typ.)
4. Zig-zag pavement markings (typ.)
5. Trail head with signage
6. Trail continuation
7. Relocate business driveway
8. Continue trail to park

Design Precedents:

Storm Water Planter



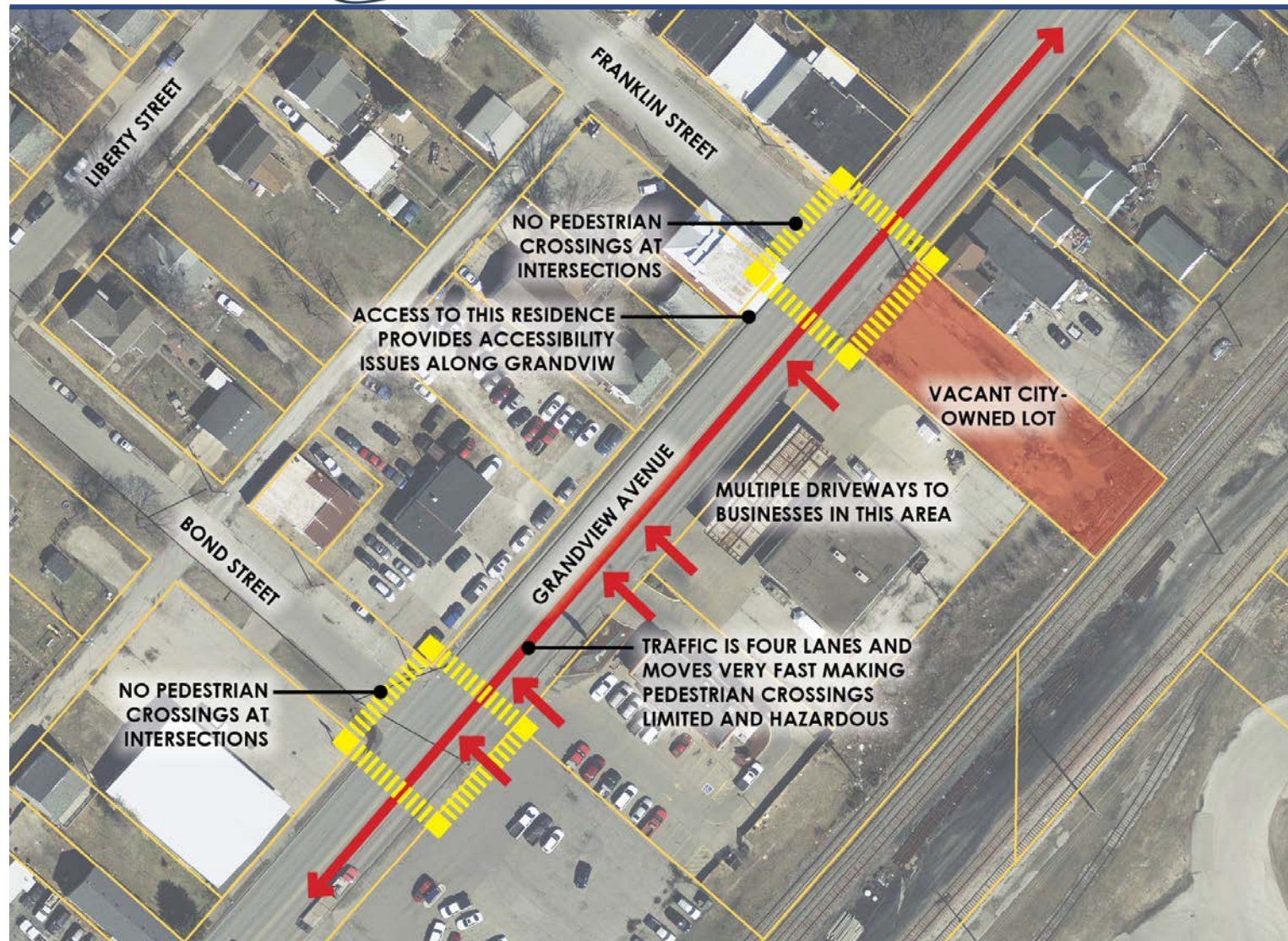
Storm Water Tree Trench



Applicable Areas:

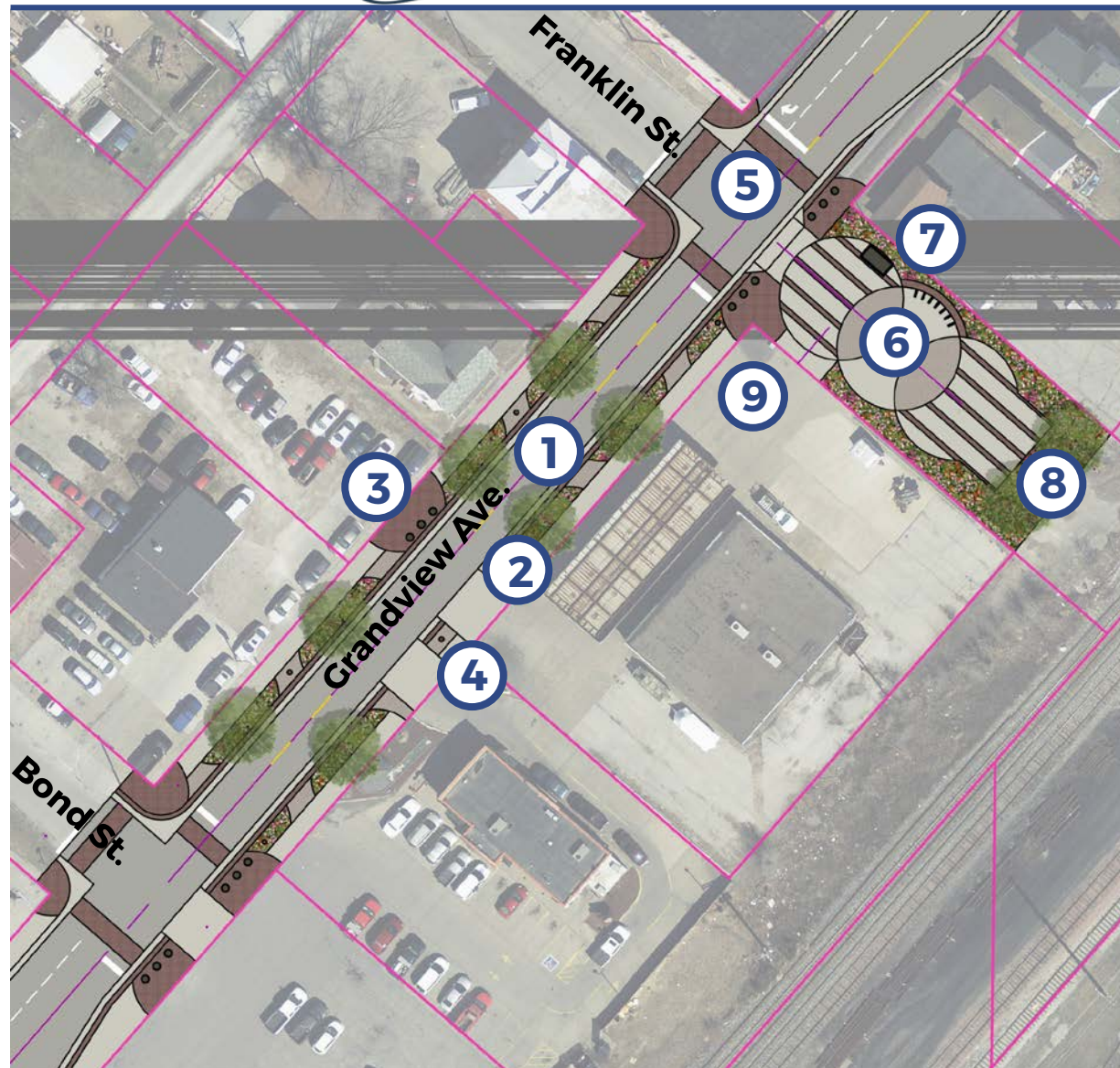


Site 05: Bond St. to Franklin St.



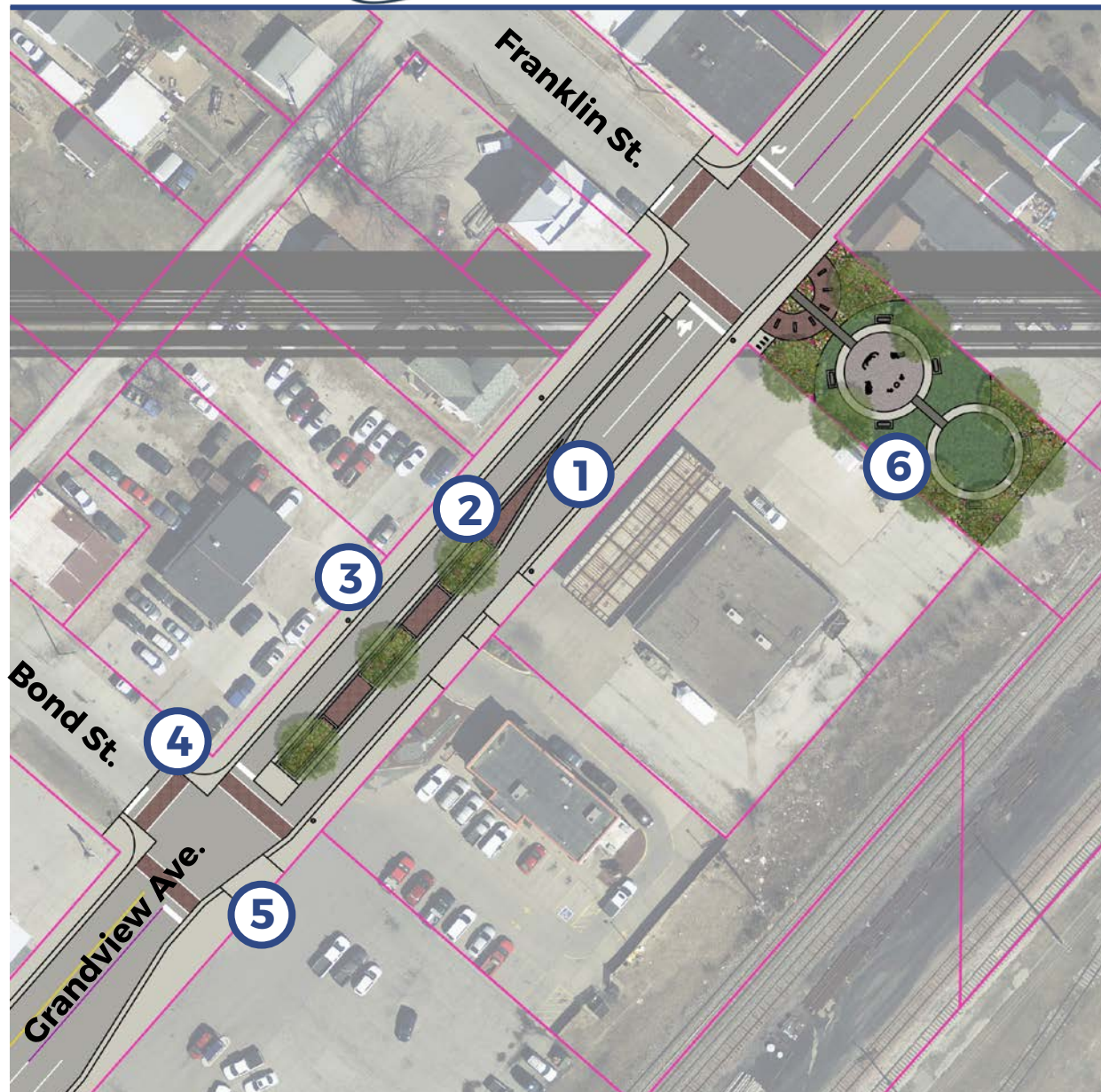
Existing Conditions & Considerations:

- True urban section of corridor
- Narrow sidewalks
- Uncomfortable pedestrian environment and no crossings
- No green space or shade



Option 'A' Design Components:

1. Two-lane road
2. Storm water planter (typ.)
3. Pervious paving system and splash pad (typ.)
4. Decorative street lighting (typ.)
5. Specialty paving crosswalks (typ.)
6. Pervious paving plaza/trailhead
7. Trail system signage and bike racks
8. Parking stalls for trailhead
9. Relocate business driveway

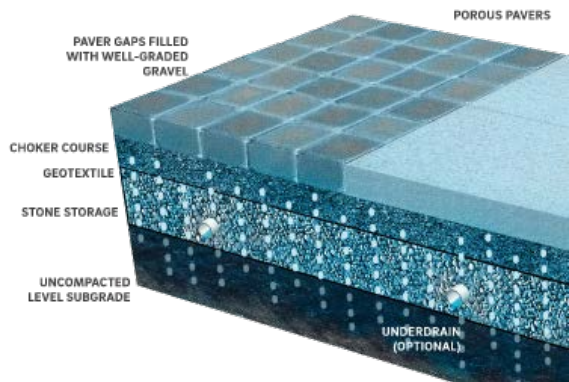


Option 'B' Design Components:

1. Pervious paving median
2. Raised landscape planter
3. Decorative street lighting (typ.)
4. Specialty paving crosswalks (typ.)
5. Relocate business driveway
6. Pocket Park

Design Precedents:

Pervious Paving



Raised Median Planter



Storm Water Planter



Applicable Areas:



- ~~Site Visit~~ – Nov. 9
- ~~Project Area Assessment~~ – Dec. 2
- ~~Initial Design Schematics & Charrette Presentation~~ – Dec. 9
- Three-Day Design Charrette – **TODAY**
- Design Options Submitted – Feb. 3
 - *EPA staff review*
- Final Design Options – Early March
- First Draft of Report – Mid-April
- Final Report Due – July



We want
to know
what you
think!

Write your
thoughts on
a sticky note
and place
them on the
printed
images.

Thank you for your time!!!

Project Contacts:

- **David Locke**, Landscape Architect
 - 605-338-6668
 - dlocke@stockwellengineers.com
- **Clark Wilson**, EPA Coordinator
 - 202-566-2880
 - wilson.clark@epa.gov
- **Andrew Fangman**, City Planner
 - 563-262-4141
 - afangman@muscatineiowa.gov

