

## City Administrator Report to Mayor & City Council

September 19, 2014, Edition No. 144

### WEEKLY UPDATE:

1. Dates to Remember: **October 23rd** is the date for our goal setting session at 5:00PM in the Lower Conference Room. Attached are a copy of the current vision/mission/goals. Also, we will need to schedule the City Administrator's annual review. This meeting is held in November. Let's target **November 20th**.
2. Pool: FYI - Please see the following from P&R - The vendor that is working on our water park slides has discovered a structural issue with the open flume blue slide. A purchase order has been issued to fix the problem this Fall.
3. TIF: GMCCI is working with Wal-View to take advantage of the Mercer-Muscatine Revolving Loan Fund. As there have been few applications under the RLF, this would assist us in making our case to EDA to allow the RLF proceeds to remain local and to allow for the continued existence of the program. A local match is required as part of the application. In discussing our options with GMCCI, it would be possible to increase the City's TIF program to account for this local match. GMCCI's RLF could be used to bridge the gap between now and the time the first rebate is received. The GMCCI loan would be repaid out of the first rebate. The increase in TIF would be around \$25,000.
4. Dog Park: Please see the attached Dog Park *DRAFT* Executive Summary. This document will provide a good and brief overview of the project. The Committee is planning to begin their fund raising efforts soon.
5. Mississippi Drive Visioning: Please see the following draft email in regards to the upcoming visit by Dan Burden. Area stakeholders will be invited. If there are one or two council members that would like to attend, please let me know. Details are yet to be finalized.

On October 30th at 8 (or 8:30) am in the Riverview Center, Wellmark has made it possible to have Dan Burden return to Muscatine to assist in a visioning effort for the Mississippi Drive Corridor Project.

You may recall that Dan Burden visited Muscatine during the Blue Zones process to provide ideas and input on how we can make Muscatine a more livable/walkable community.

More information on Dan Burden can be found at the following website: [walklive.org](http://walklive.org) The WALC Institute is an educational, 501(c)(3) non-profit organization working to create healthy, connected communities that support active living and that advance opportunities for all people through walkable streets, livable cities and better built environments.

The City of Muscatine would like to invite you or your representative to attend and participate in this exciting opportunity with Dan Burden! We have a real opportunity to make important and long-lasting improvements to this vital corridor and further enhance our riverfront and downtown.

The following links provide good background materials:

Dan Burden Report (Toward Health and Well-Being in Muscatine, Built Environment: Opportunities for Change) - <http://www.muscatineiowa.gov/index.aspx?NID=768>

IISC Student reports - <http://iisc.uiowa.edu/partner/muscatine-ia>

2013-03-14 Mississippi Drive Corridor Update - <http://ia-muscatine.civicplus.com/DocumentCenter/View/9141>

2007 Mississippi Drive Corridor Study - (link coming)

Comprehensive Plan - <http://www.muscatineiowa.gov/index.aspx?NID=518>

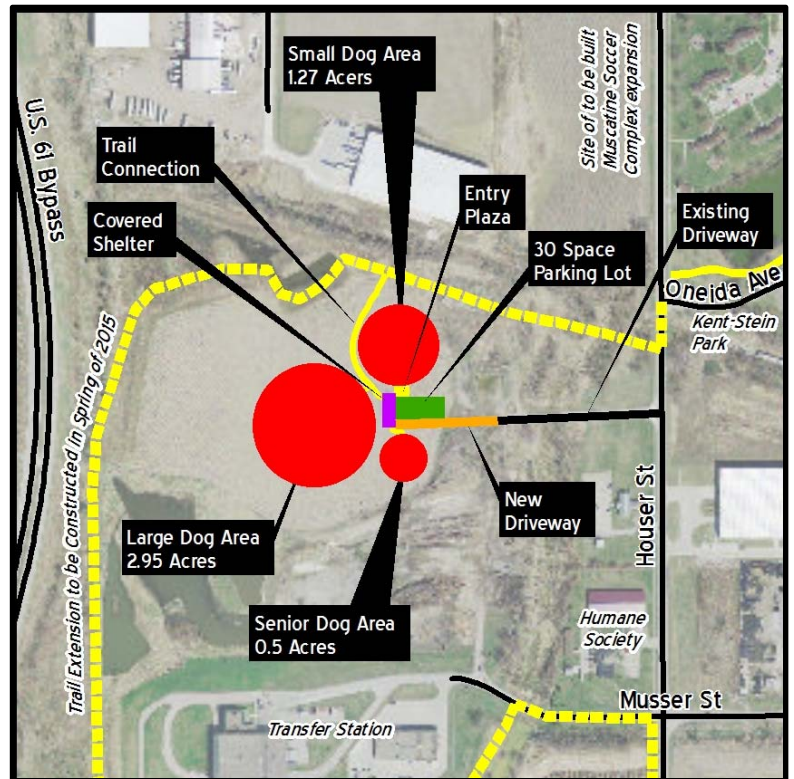
# Muscatine Community Dog Park

A 4.72 acre off-leash dog park is being proposed for construction on municipally owned land located directly north of the transfer station and west of Kent-Stein Park. The proposed design consists of three circular fenced areas intended for separate use by large, small, and senior dogs. There will also be a 30 spot parking lot, covered shelter, and a connection to the City's trail network, that will be shared by all three off-leash areas.

The proposal for an off-leash dog park is the result of a grassroots effort of a great number of members of the Muscatine community. There is a growing consensus that an off-leash dog park is vital and necessary part of a community's recreational infrastructure. The first off-leash dog park in the United States opened in 1979. Since then growth rate in the number of off-leash dog parks has exceeded the overall growth rate of parks by tenfold. There are now over 2,000 off-leash dog parks in the United States, with nearly 50% of jurisdictions that operate park facilities having an off-leash dog park. In recent years numerous off-leash dog parks have been built in communities across Eastern Iowa, including Iowa City, Davenport, Bettendorf, Burlington, Clinton, and Cedar Rapids. A growing demand for an off-leash dog park has been clearly expressed by the Muscatine community in recent years.

The current City of Muscatine Comprehensive Plan was adopted on September 19, 2013. The first step in developing this vision contained within the Comprehensive Plan was for community members to identify the strengths, weaknesses, challenges, and opportunities facing Muscatine and their neighborhood and what they want the City of Muscatine and their neighborhood to become. This process primarily occurred at a series of eight town hall meetings in the summer of 2012. During this process the need for a dog park was the most frequently received public comment.

The construction of an off-leash dog park was established as Goal PR.3 of the City of Muscatine Comprehensive Plan. This goal calls for the City to make municipally owned land available for the construction of an off-leash dog park, with funds for the construction of an off-leash dog park to come from non-municipal sources. The Plan envisions the City of Muscatine operating and maintaining the off-leash dog park using funds obtained through user fees. Goal PR.3 also



contains numerous design and location criteria, the proposed design and location satisfies all these criteria.

In 2013 Citizens for an Off-leash Muscatine Park (COMP), a volunteer committee, was formed. COMP was established with the purpose of getting an off-leash dog park in Muscatine constructed and then ensure that the operation of any off-leash dog park that is constructed is strongly supported by members of the community. In its first year COMP focused on three things; raising awareness of the need for and an effort to build an off-leash dog park, beginning to raise funds for the construction of an off-leash dog park, and developing a sustainable off-leash dog park plan.

<b>Phase 1</b>	
Fencing - 3 areas	\$105,000
Parking lot/driveway	\$85,000
Land prep	\$20,500
Entrance Shelter	\$20,000
5 - benches	\$2,500
3 - Water fountains	\$7,500
Communication Board	\$500
4 - Shade Shelters	\$16,000
Walkway to trail system	TBD
	<b>\$257,000</b>
<b>Phase 2</b>	
Fencing - Training area	\$38,732
Landscaping	\$10,000
5 - benches	\$2,500
3 - Shade Shelters	\$12,000
1 - Water Fountain	\$2,500
	<b>\$65,732</b>
<b>Phase 3</b>	
2 - Water features	\$10,000
Storage Shed	\$5,000
Security Lighting	\$25,000
Agility Equipment	\$1,500
	<b>\$41,500</b>
<b>Total</b>	<b>\$364,232</b>

COMP worked closely with the City of Muscatine and the Community Improvement Action Team (CIAT) to identify a preferred site for an off-leash dog park. The identified preferred site is on municipally owned land located directly north of the transfer station and west of Kent-Stein Park. This site was identified as the preferred location because of its proximity to existing and planned recreational amenities, proximity to the humane society, and because it is not being currently utilized for municipal purposes. Currently it is rented farm land. The concept of using this location for an off-leash dog park was present to City Council, who gave a consensus to proceed with using this preferred location for an off-leash dog park.

COMP and CIAT enlisted the help of Iowa State University's Partnering Landscape and Community Enhancements program, which allows for Iowa communities to apply for help with community enhancement projects. Professor Matthew Gordy and 15 third-year landscape architecture students worked with COMP to developed two design concepts for the identified preferred location of the off-leash dog park. A preferred design was selected from these two designs.

A cost estimate for constructing the preferred design in three phases has been developed. It is estimated the first phase, which will establish a functioning off-leash dog park will cost \$257,000 to construct, and that to complete everything envisioned in the preferred designed a reality will cost \$364,232. COMP's current task is raising the necessary funds to make the community's vision off an off-leash dog park a reality.